

# Digilent XC2-XL™ CPLD Board

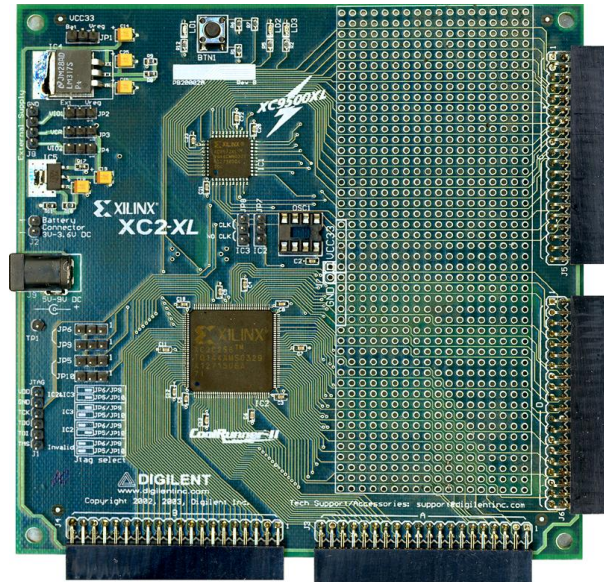
Revision: June 18, 2004



www.digilentinc.com

215 E Main Suite D | Pullman, WA 99163  
(509) 334 6306 Voice and Fax

The Digilent XC2-XL CPLD Board (the XC2-XL™) is a self-contained development platform that contains two Xilinx CPLDs: a CoolRunner-II XC2C256, and an XC9572XL. The XC2-XL provides an ideal platform for engineers needing exposure to Xilinx CPLDs or to the latest Xilinx CAD tools. It provides a JTAG programming circuit, power supplies, a clock source, and basic I/O devices, so circuits can be implemented immediately without the need for any other components. All CPLD signals are brought to expansion connectors, allowing accessory circuits to be added to the on-board prototype area or attached via expansion boards. The XC2-XL is compatible with all versions of Xilinx CAD tools, including the free WebPack tools available at the Xilinx website. The XC2-XL ships with a power supply and programming cable, so designs can be implemented immediately without any further costs.



## FEATURES AND BENEFITS

- A Xilinx CoolRunner-II XC2C256 CPLD in a TQ144 package;
- A Xilinx XC9572XL CPLD in a VQ44 package;
- JTAG ports to both CPLDs that can be independently enabled or disabled;
- Flexible power delivery using a wall-plug transformer, batteries, or external supplies;
- A socketed oscillator (1.8432MHz included; clocks up to 100+MHz can be used);
- Full routing of all I/O signals from both CPLDs to expansion connectors;
- A button and two LEDs for basic I/O;
- Non-volatility – as with all Xilinx CPLDs, designs remain after power is removed.

